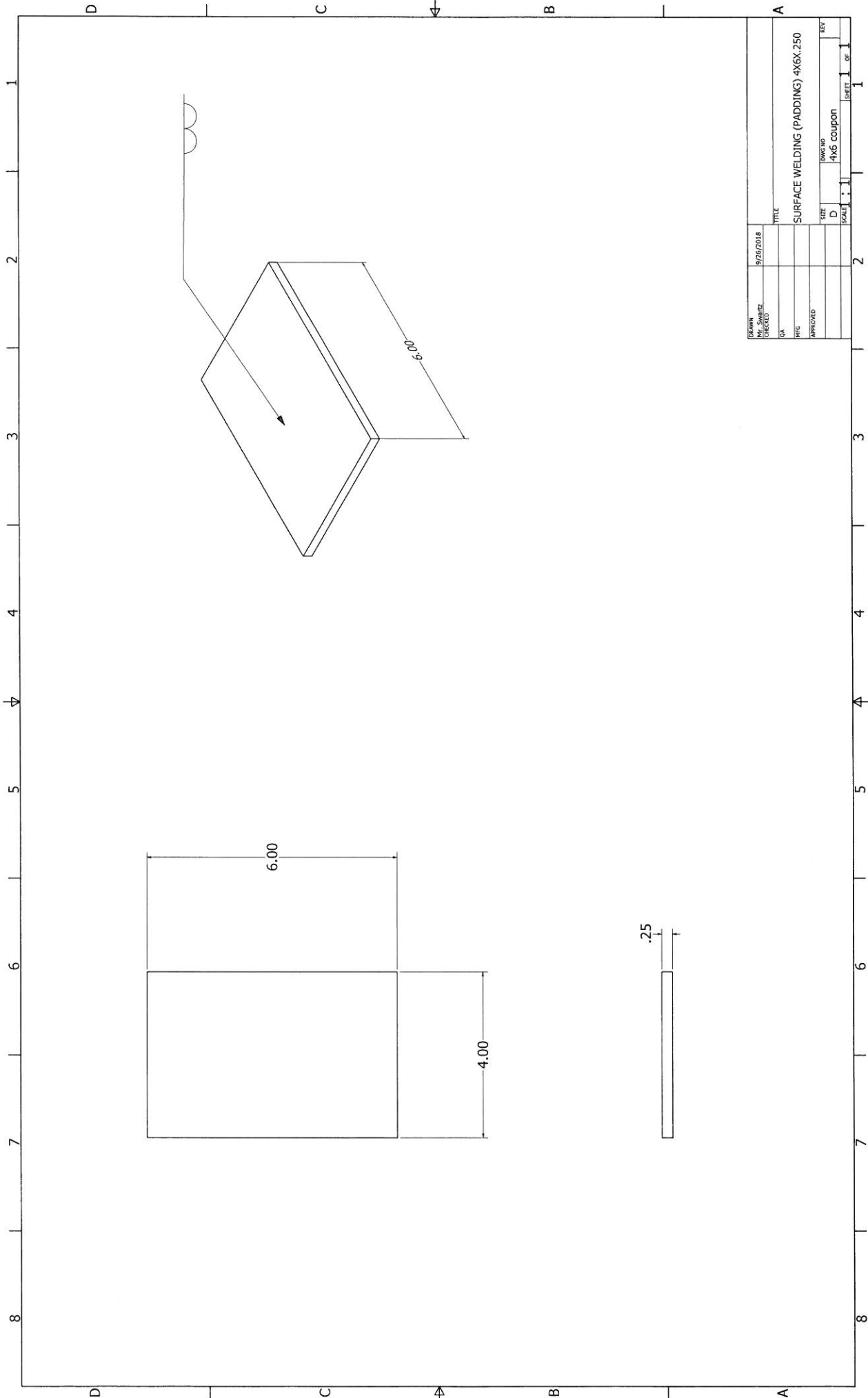


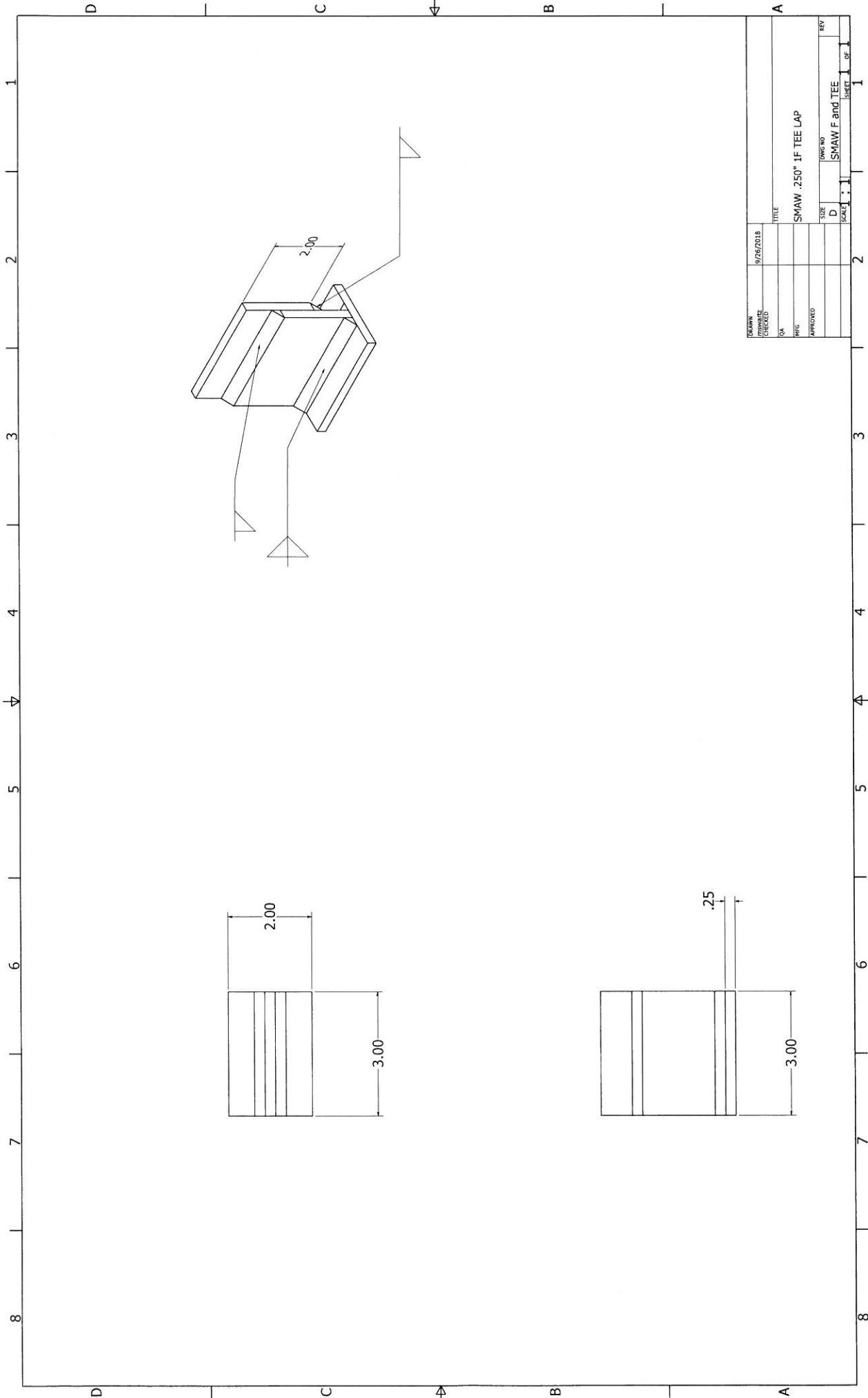
DCT 100-125A

SMAW ER6013



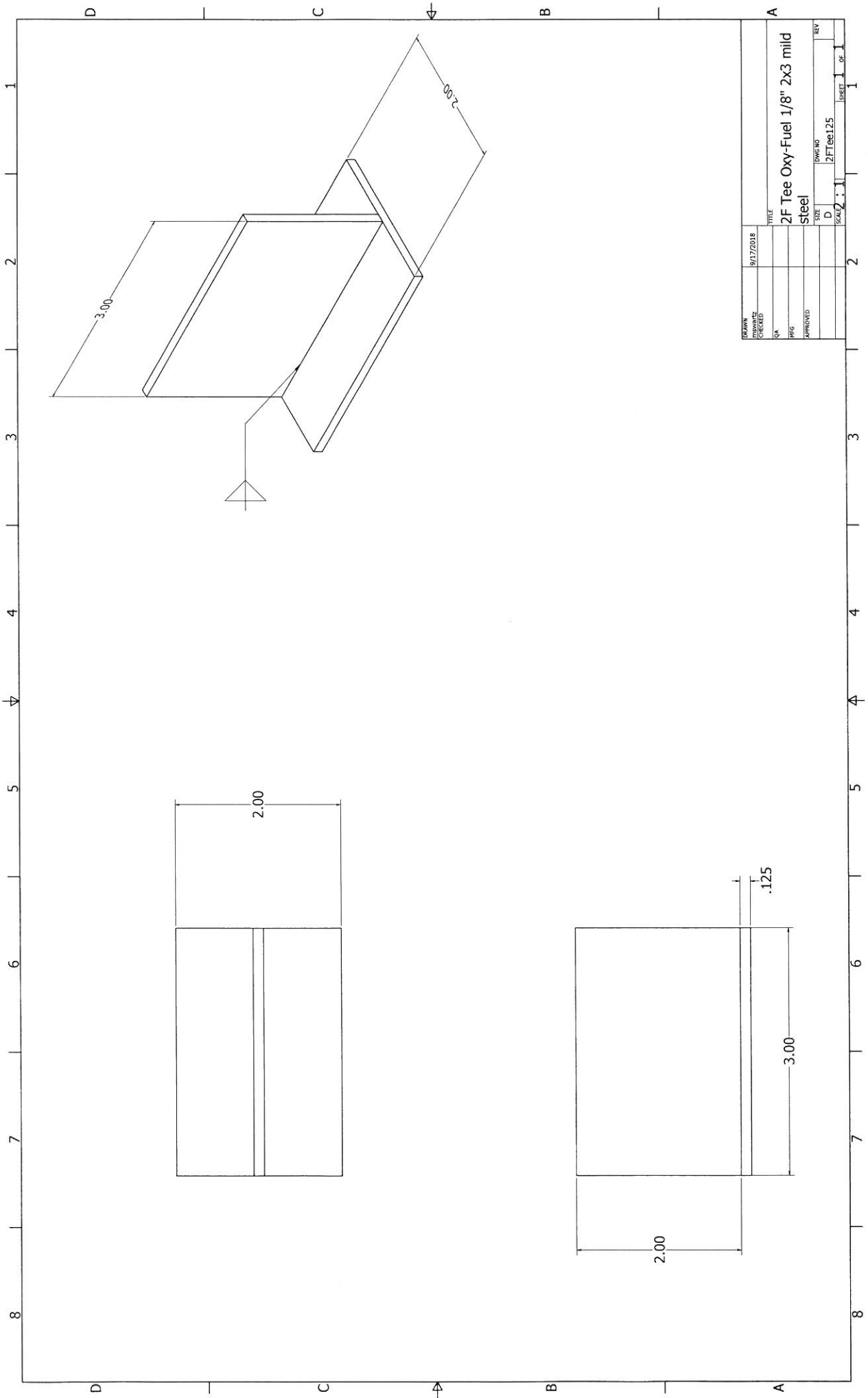
DATE	9/26/2018
CHECKED	
QA	
APPROVED	
TITLE	SURFACE WELDING (PADDING) 4X6X.250
SIZE	D
KEY	4X6 coupon
SCALE	1:1
SHEET	1
OF	1

SMAW 6013 Dct 100-125A



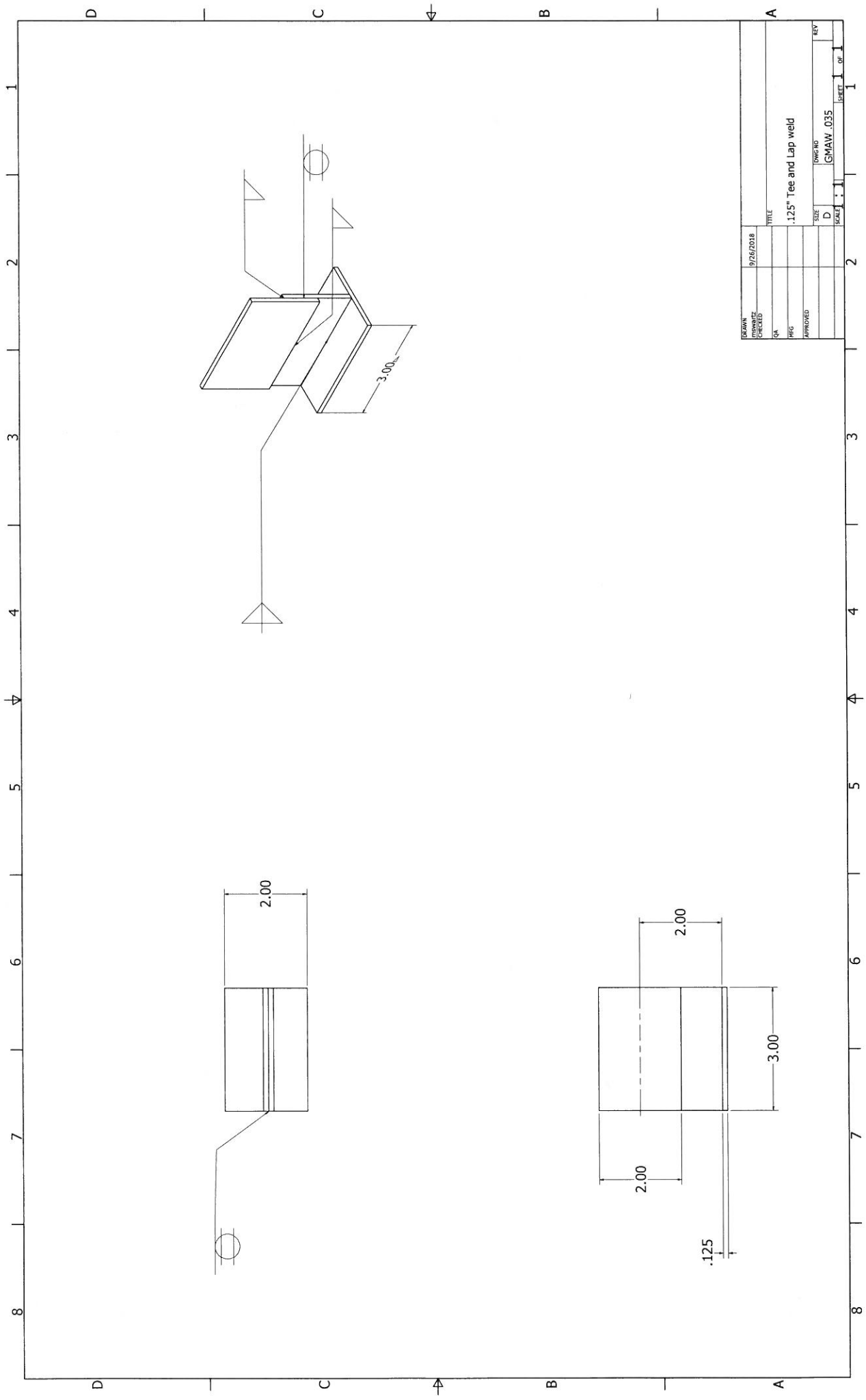
DATE	9/26/2018
CHECKED	
TITLE	SMAW .250" IF TEE LAP
PKL	
APPROVED	
SIZE	D
SCALE	1:1
REV	
	SMAW F. RND TEE
	1 OF 1

# OXY-FUEL WELDING



DATE 9/17/2018	TITLE
DRAWN MORANZ	2F Tee Oxy-Fuel 1/8" 2x3 mild steel
CHECKED M	steel
DATE 9/17/2018	SIZE D
APPROVED M	SCALE 1:1
DWG NO 2F Tee 125	SHEET 1 OF 1

GMAW .035



DATE	8/26/2018	TITLE	
CHECKED		SIZE	.125" Tee and Lap weld
QA		SCALE	1:1
PHIG		DRW'NG	GMAW .035
APPROVED		REV	
		SHEET	1 OF 1



# WELDING SYMBOLS

QUICK-CARDS® A UNIQUE QUICK-REFERENCE GUIDE

Builder's Book, Inc.

BOOKSTORE • PUBLISHER

8001 Canoga Avenue, Canoga Park, CA 91304

1-800-273-7375 • 1-818-887-7828

www.buildersbook.com



## WELDING SYMBOLS

Arrow Side	Other Side	Weld or Supplementary Item
		Fillet
		Square Groove
		Vee Groove
		Bevel Groove
		U Groove
		J Groove
		Flare Vee Groove
		Flare Bevel Groove
		Plug or Slot Weld
		Backing bar (with groove weld symbol opposite)
		Space bar (with groove weld symbol both sides)
		Back or Backing weld
		Spot Weld (Sheet Metal)
		Seam Weld (Sheet Steel)
	Not Applicable	Stud Weld
		Flush Contour
		Convex Contour
		Concave Contour

WELD JOINTS AND POSITIONS					
POSITION	BUTT	LAP	T	EDGE	CORNER
FLAT					
HORIZONTAL					
VERTICAL					
OVERHEAD					

TYPES OF JOINTS	
Butt	
Tee	
Corner	
Lap	
Edge	

TYPES OF WELDS		
Type	Single	Double
Fillet		
Square		
Bevel Groove		
Vee Groove		
J Groove		
U Groove		

ISO SYMBOLS		
No.	Designation	ISO Symbol
1	Butt weld between plates with raised edges	
2	Square butt weld	
3	Single-V butt weld	
4	Single-bevel butt weld	
5	Single-V butt weld with broad root face	
6	Single-bevel butt weld with broad root face	
7	Single-U butt weld (parallel or sloping sides)	
8	Single-J butt weld	
9	Backing run	
10	Fillet weld	
11	Plug weld	
12	Spot (projection) weld	
13	Spot weld	
14	Seam weld	
15	-----	No Symbol
16	Surfacing weld	
17	-----	No Symbol
18	-----	No Symbol
19	Permanent backing strip used	
	Removable backing strip used	
20	Inclined joint	
21	Surface joint	
22	Edge weld	
23	Steeped-flanked single-V Butt weld	
24	Steeped-flanked single-V bevel butt weld	
25	Fold joint	
26	Flat (usually finished)	
27	Convex	
28	Concave	
29	Toes shall be blended smoothly	
30	Peripheral weld	
31	Field or site weld	
32	-----	No Symbol
33	-----	No Symbol
34	-----	No Symbol
35	-----	No Symbol
36	Fillet weld leg length (size is preceded by lowercase "z")	
37	Fillet weld throat thickness (thickness is preceded by the letter "a")	
38	Tail of welding symbols for reference	
39	Staggered intermittent fillet weld	

AWS SYMBOLS		
No.	Designation	AWS Symbol
1	Edge weld	
2	Square groove weld	
3	V-Groove weld	
4	Bevel groove weld	
5	-----	No Symbol
6	-----	No Symbol
7	U-groove weld	
8	J-groove weld	
9	Back or backing weld	
10	Fillet weld	
11	Plug or slot weld	
12	Projection weld	
13	Spot weld	
14	Seam weld	
15	Stud weld	
16	Surfacing weld	
17	Melt-thru weld	
18	Consumable insert (square)	
19	Permanent backing or spacer Backing to be removed	
20	Scarf	
21	-----	No Symbol
22	Edge weld	
23	V-groove weld	
24	Bevel groove	
25	-----	No Symbol
26	Flush or flat	
27	Convex contour	
28	Concave contour	
29	No such designation	No Symbol
30	Weld-all-around	
31	Field weld	
32	Double V-groove with spacer	
33	Double U-groove with spacer	
34	Double bevel groove with spacer	
35	Double J-groove with spacer	
36	Fillet weld leg size	
37	-----	No similar symbol designation
38	Tail of welding symbol for reference info.	
39	Staggered intermittent fillet weld	